

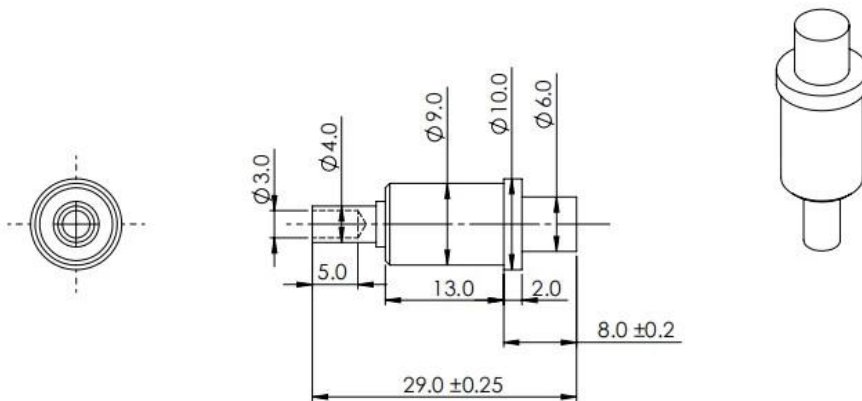
10A SF-PPA9.0 BY 29MM

□□□□

□	ENG
□□□□	□□□SF-PPA9.0 * 29-G
□□	□□
□□□	100□
□□□□	□□□□□□7□□□□

□□□□





Material:
Barrel: Brass, Ni Plated
Plunger : Brass, Au on Ni plated
Spring : SUS

Specifications:

Current Rating : 10A
Full stroke: 6mm
Rated stroke : 4mm
Spring force: 320 +/-10% @load 4mm.

□□□□

- 1. □□□□24□□□□□□□□□□
- 2. □□□□□□□□□□OEM□
- 3. □□□□□□□□□□□□□□
- 4. □□□□□□□□□□□□□□□□ □

□□□□

□□□□□□□□□□PCB□ICT□FCT□□□□

□□□□□□□□□□□□□□□□□□□□□□□□□□□□□□□□

□□BGA□□□□□□□□□□□□

□□□□□□□□□□LM□□QZ□VZ□□□

□□□□□□□□□□□□□□

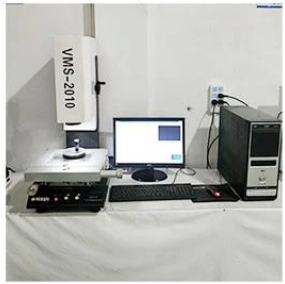
□□□□□/□□□

□□□□□□□□□□30□□OK□□□□□□□□POM□□□□□□

□□□□



1. Agilent current testing



2. Quadratic element



3. Load Curve Meter



4. Bond Test



5. Life Fatigue Test



6. Microscope

□□□

Standard products will be delivered out within 3 days. Customized products will be sent out within 15 days.

