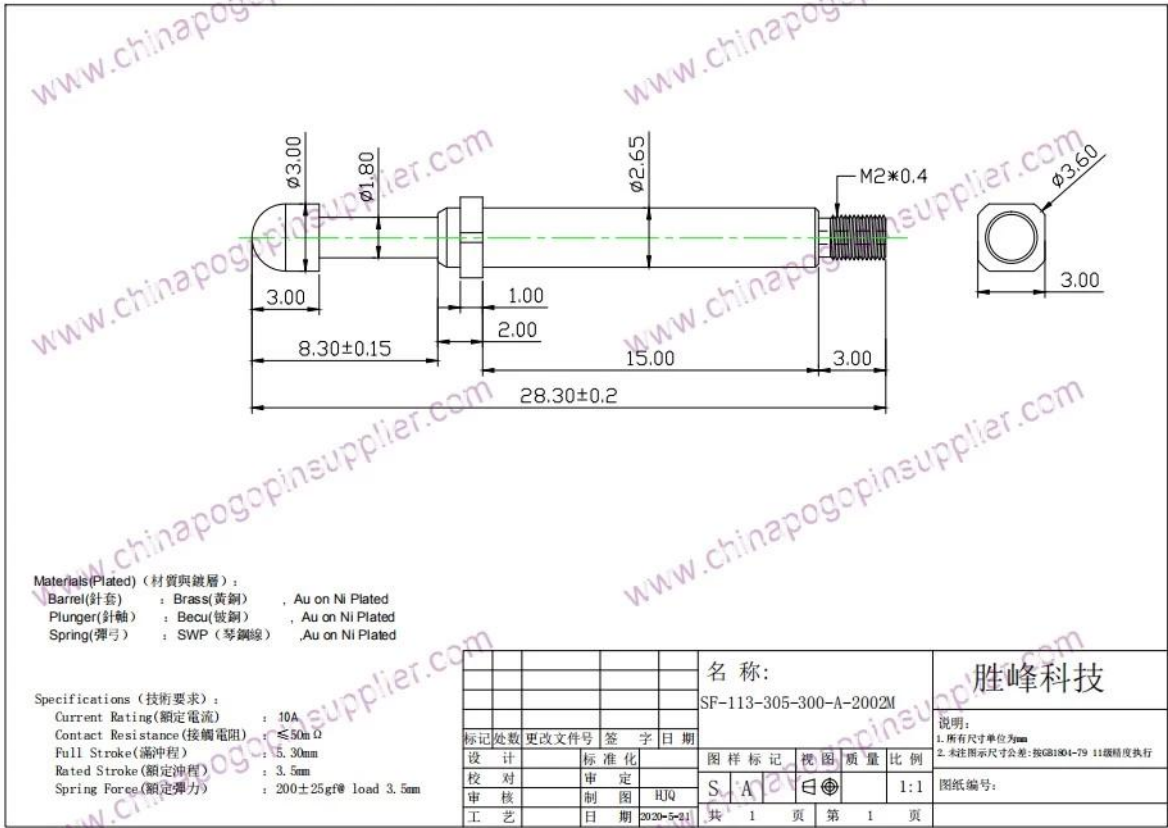


# SF-113-305-300-A-2002M

□□ □□

□□ □□	□□□□□□SF-113-305-300-A-2002M
□□	□□2.65□□□□□□28.3m
□□ □ □□	□□□ □□□□ □□ □□ □□□□ □□ □□□ □□ □□
□□ □□	10A
□□ □	<b>200±25gf @□□ 3.5□□ □□□ □□</b>





1 胜峰科技  
 2 胜峰科技  
 3 胜峰科技  
 4 胜峰科技  
 5 胜峰科技  
 6 胜峰科技

胜峰科技



1. Raw material warehouse



2. Lathe workshop



3. Assemble workshop



4. Quality inspection



5. Finished products

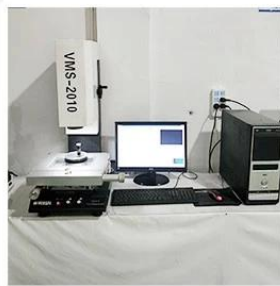


6. Packing

□□□□



1. Agilent current testing



2. Quadratic element



3. Load Curve Meter



4. Bond Test



5. Life Fatigue Test



6. Microscope

□□□□

Standard products will be delivered out within 3 days. Customized products will be sent out within 15 days.

