

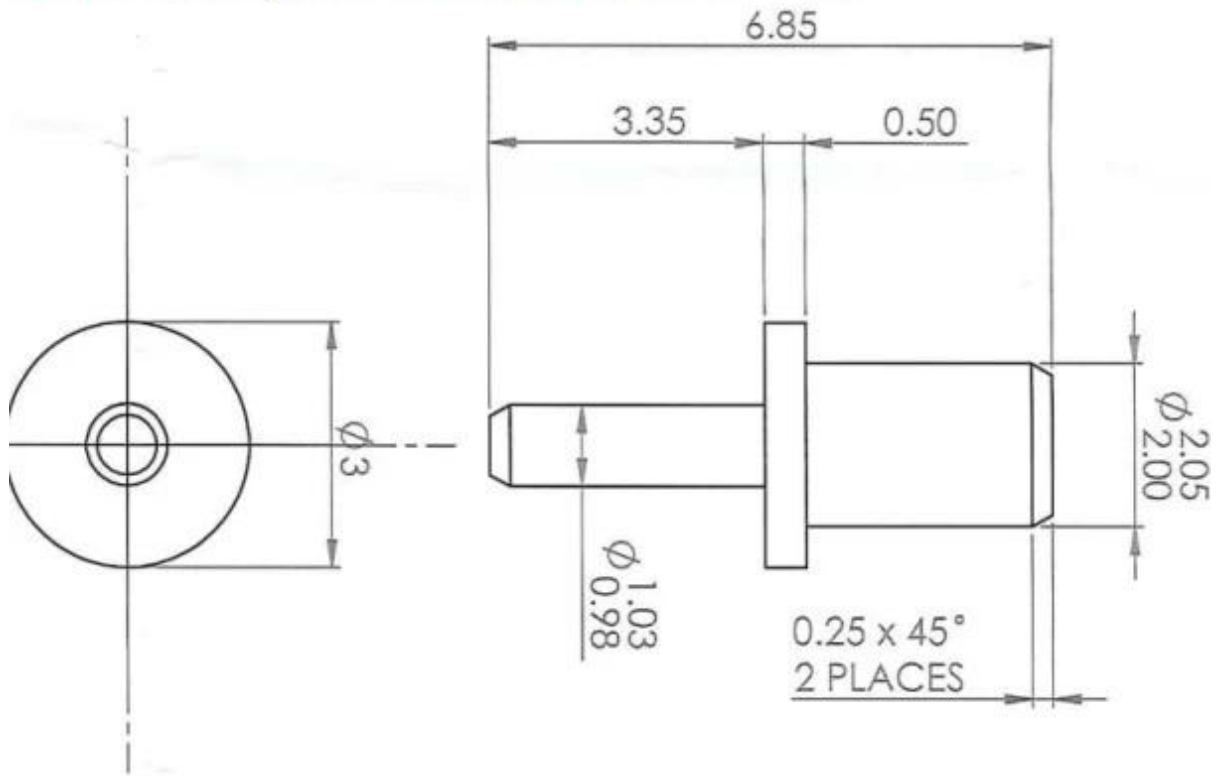
□□□□

□	SFENG
□□□□	□□□□SF-Pin 2.05 * 6.85mm
□□□□□	□□□□□□□□
□□□□	□□□□□7□□□□□

□□□□



terminal pin SF-Pin 2.05*6.85mm



应用







1. 24
2. OEM
- 3.

应用

- PCB ICT FCT
- Pogo pin
- BGA
- QZ VZ LM
-
- &/

30OKPOM

□□□□

Spring exhausted tester	DC power supply	Current resistance tester
		
Microscope	Tensile strength tester	Spring tester
		

□□□□

