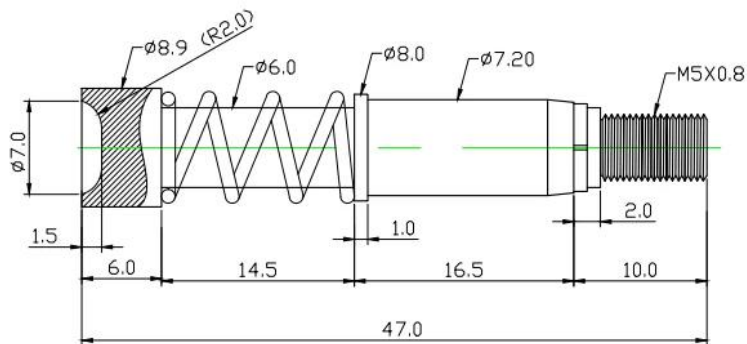




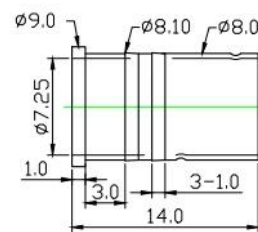
□□□□	SF3151
□□□□	35A
□□ □□	50□□
□□□	900±100gf@□□ 6.0mm
□□	□□□□□□
□	□□□□□
□□	□□□
□□ □□	OEM & ODM
□□□	100PCS
□□	□□□□□□
□□	100% T/T □□□
□□□□	5-10 □ □□ □□□



名称: SF-35A大电流针 ϕ 7.2X47

Materials(Plated) (材質與鍍層):
 Barrel(針套) : Brass(黃銅) , Ni
 Plunger(針軸) : Brass(黃銅) , Au on Ni Plated
 Spring(彈弓) : SUS (不銹鋼線) , /

Specifications (技術要求):
 Current Rating(額定電流) : 35A
 Contact Resistance(接觸電阻) : 50m Ω
 Rated Stroke(額定沖程) : 6.00mm
 Spring Force(額定彈力) : 900g \pm 100gf@ load 6.00mm



名称: SF-BR-35A大电流针 ϕ 7.2X47

材质: Brass(黃銅) Ni





1. raw material warehouse



2. Lathe workshop



3. Assemble workshop



4. Quality inspection



5. Finished products



6. Packing



Measuring Equipment >



Measuring Equipment:

1. Agilent current testing;
2. Quadratic element measurement
3. Load Curve Meter
4. Bond Test
5. Life Fatigue Test



