

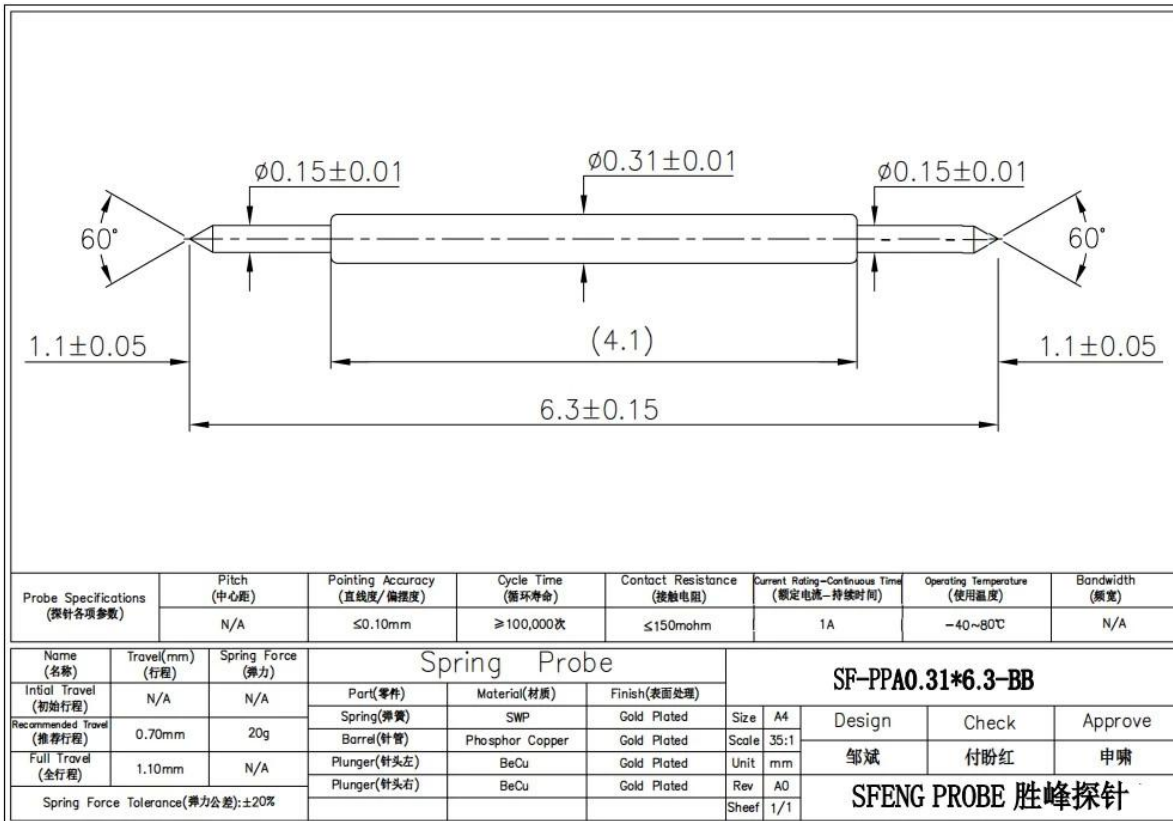
Doppelter Stiftkontakt Pogo-Stift SF-PPA0.31 BY 6.3-BB

Spezifikation:

Marke	SFENG SONDE
Artikel Nummer	Doppelter Stiftkontakt Pogo-Stift SF-PPA0.31 BY 6.3-BB
Kolben	Becu
Fass	PhBz
Frühling	SWP
Überzug	Gold plattiert Über Nickel
Frühling Macht	20 g \pm 20% bei Last 0,70 mm Arbeitshub
Kontakt Widerstand	M 50m Ohm
Aktuell Ration	1A
MOQ	100 STÜCKE wenn wir haben Lager
Führen Zeit	2-15 Tage nach Empfang das Zahlung

Bild Show:





Unsere Vorteile:

1. we have 30 years experience in probe pin and have ourself factory.
2. we provide free sample and have a testing department.
3. we could manufacture products as your request.
4. we guarantee best price and good service.

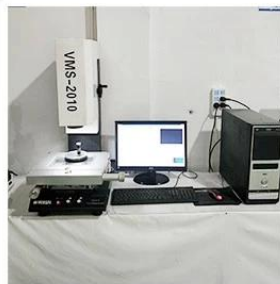
Unser Hauptprodukt:

Spring loaded pin (single) for PCB, ICT, FCT testing etc;
Pogo pin (connector) to establish connection between two printed circuit boards for charging, locating, Battery, Semiconductor & Interconnect applications;
Double ended probe for BGA and Semiconductor testing;
Universal pin without spring, coating pin, LM pin with QZ and VZ series;
High current probe, Switch probe, Capacitance needle;
Terminal & receptacle /socket;
Other related electronic components, 30# OK wire, Jig locks, POM, Iron hinge etc

Ausrüstung testen:



1. Agilent current testing



2. Quadratic element



3. Load Curve Meter



4. Bond Test



5. Life Fatigue Test



6. Microscope

Paket:

Standard products will be delivered out within 3 days. Customized products will be sent out within 15 days.

