

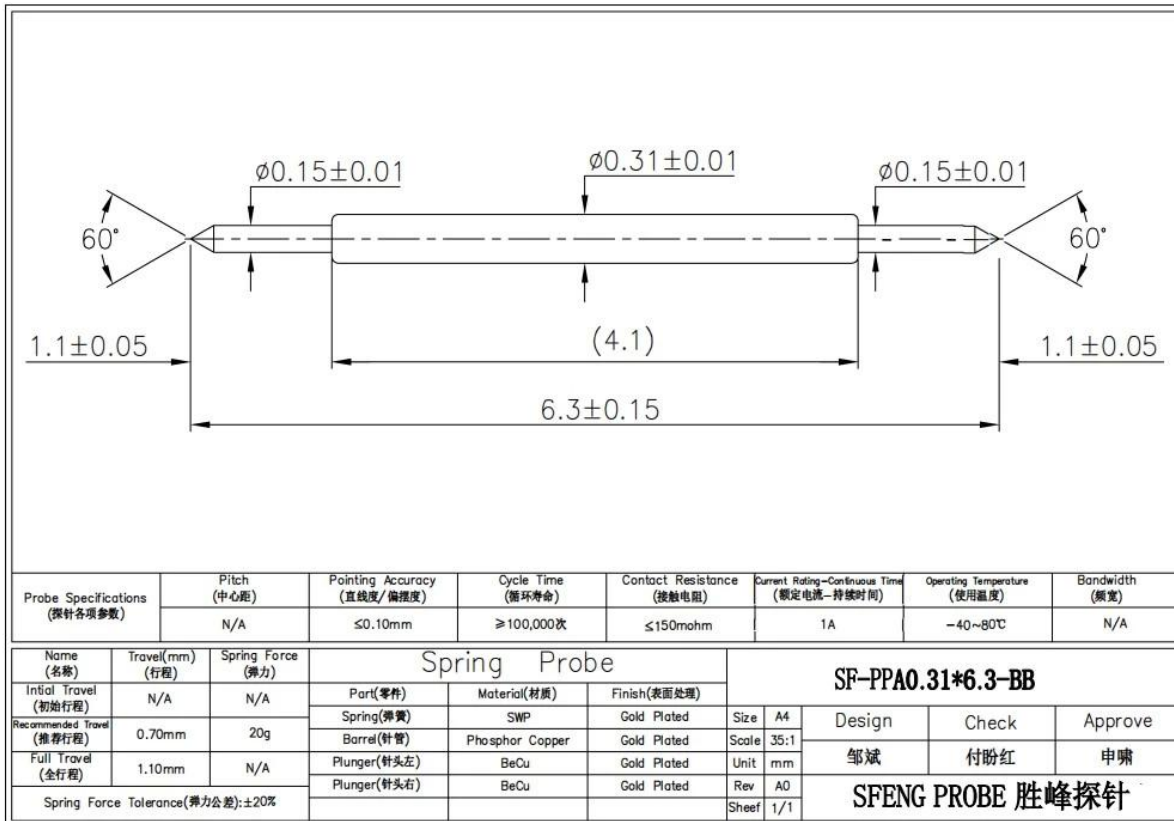
[Pin de contacto de doble punta pin pogo SF-PPA0.31 BY 6.3-BB](#)

Especificación:

Marca	SFENG INVESTIGACION
Artículo Número	Pin de contacto de doble punta pin pogo SF-PPA0.31 BY 6.3-BB
Émbolo	Becu
Barril	PhBz
Primavera	SWP
Enchapado	oro chapado terminado níquel
Primavera fuerza	20g \pm 20% @ carga 0.70mm carrera de trabajo
Contacto Resistencia	\square 50m ohm
Actual ración	1A
MOQ	100 piezas Si nosotros tener valores
Dirigir hora	2-15days después recepción la pago

Imagen Mostrar:





Nuestras ventajas:

1. we have 30 years experience in probe pin and have ourself factory.
2. we provide free sample and have a testing department.
3. we could manufacture products as your request.
4. we guarantee best price and good service.

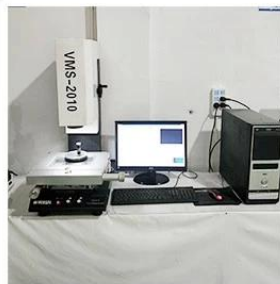
Nuestro producto principal:

Spring loaded pin (single) for PCB, ICT, FCT testing etc;
Pogo pin (connector) to establish connection between two printed circuit boards for charging, locating, Battery, Semiconductor & Interconnect applications;
Double ended probe for BGA and Semiconductor testing;
Universal pin without spring, coating pin, LM pin with QZ and VZ series;
High current probe, Switch probe, Capacitance needle;
Terminal & receptacle /socket;
Other related electronic components, 30# OK wire, Jig locks, POM, Iron hinge etc

Equipo de pruebas:



1. Agilent current testing



2. Quadratic element



3. Load Curve Meter



4. Bond Test



5. Life Fatigue Test



6. Microscope

Paquete:

Standard products will be delivered out within 3 days. Customized products will be sent out within 15 days.

