

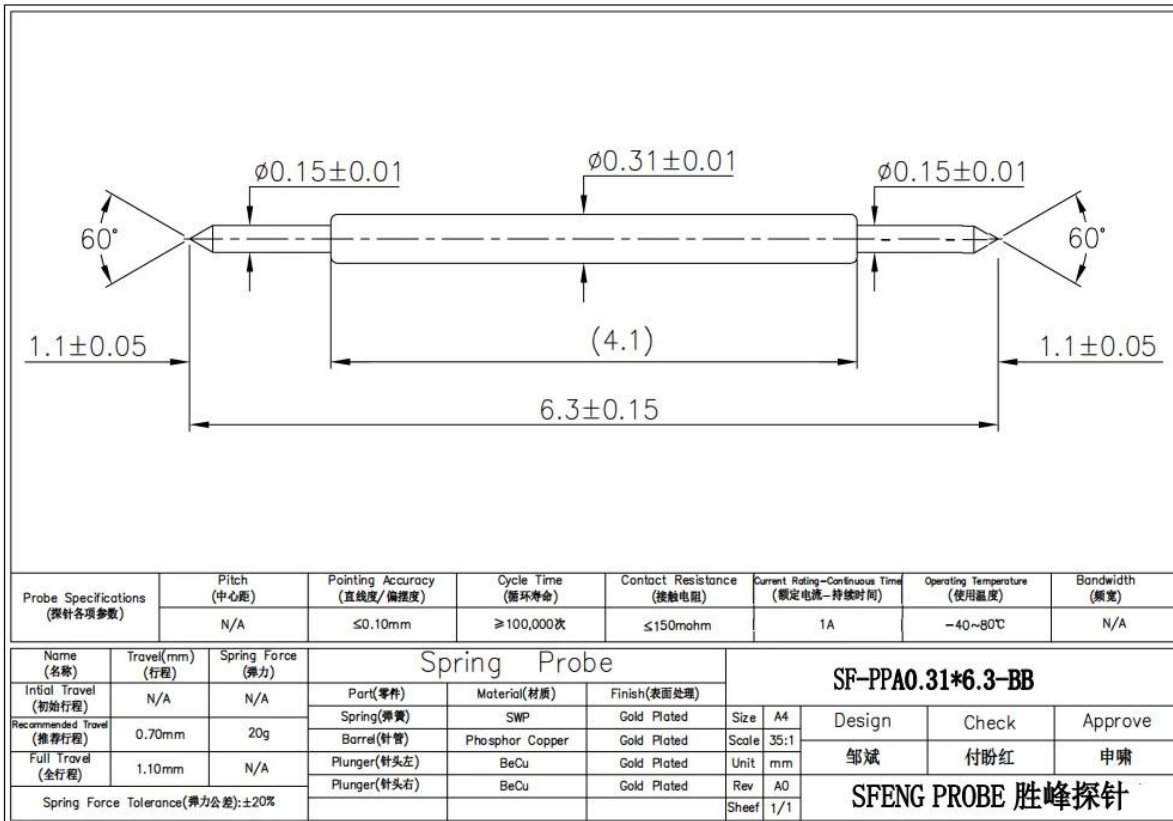
[Double ended pin contact pogo pin SF-PPA0.31 BY 6.3-BB](#)

Specification:

Brand	SFENG PROBE
Item Number	Double ended pin contact pogo pin SF-PPA0.31 BY 6.3-BB
Plunger	Becu
Barrel	PhBz
Spring	SWP
Plating	gold plated over nickel
Spring force	20g \pm 20% @ load 0.70mm working stroke
Contact Resistance	\leq 50m ohm
Current ration	1A
MOQ	100PCS if we have stock
Lead time	2-15days after receiving the payment

Picture Show:





Our Advantages:

1. we have 30 years experience in probe pin and have ourself factory.
2. we provide free sample and have a testing department.
3. we could manufacture products as your request.
4. we guarantee best price and good service.

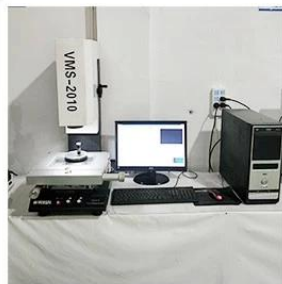
Our Main Product:

Spring loaded pin (single) for PCB, ICT, FCT testing etc;
Pogo pin (connector) to establish connection between two printed circuit boards for charging, locating, Battery, Semiconductor & Interconnect applications;
Double ended probe for BGA and Semiconductor testing;
Universal pin without spring, coating pin, LM pin with QZ and VZ series;
High current probe, Switch probe, Capacitance needle;
Terminal & receptacle /socket;
Other related electronic components, 30# OK wire, Jig locks, POM, Iron hinge etc

Testing Equipment:



1. Agilent current testing



2. Quadratic element



3. Load Curve Meter



4. Bond Test



5. Life Fatigue Test



6. Microscope

Package:

Standard products will be delivered out within 3 days. Customized products will be sent out within 15 days.

