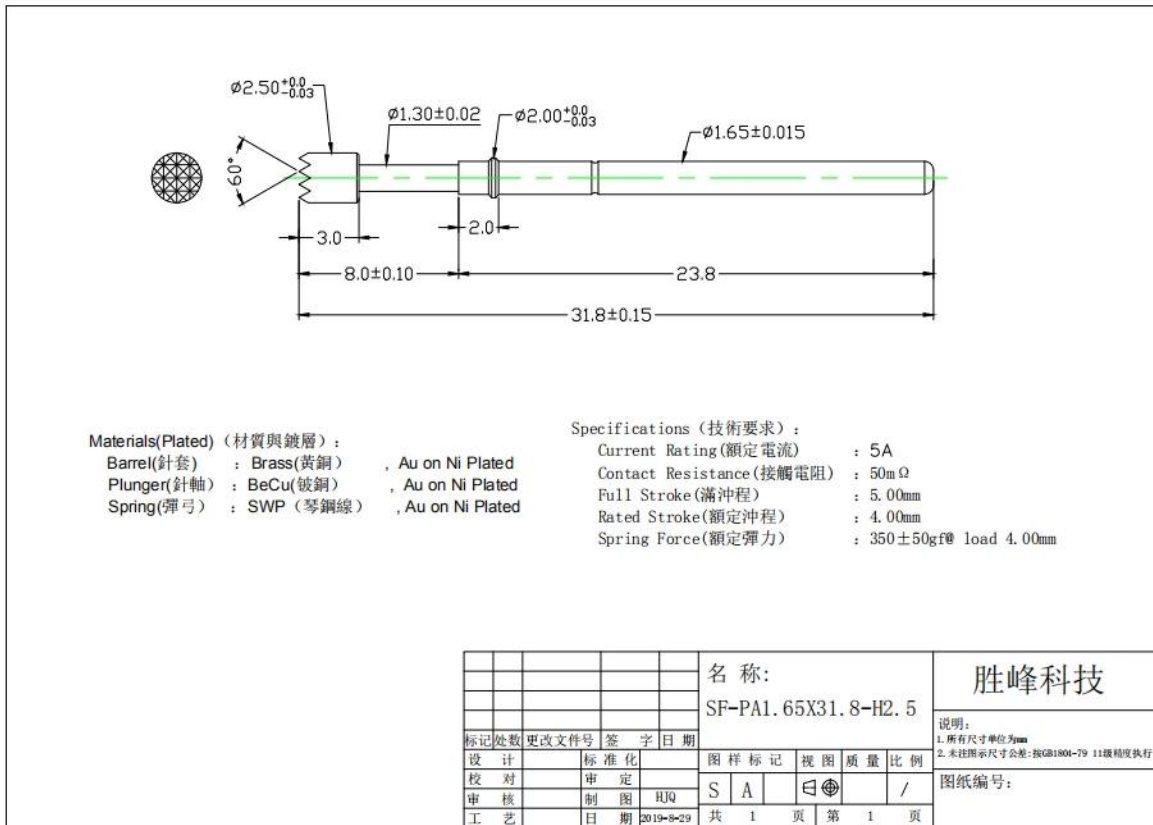


## PCB test probe SF-PA1.65 BY 31.8-H2.5

### Product Picture

Product Item	PCB test probe SF-PA1.65 BY 31.8-H2.5
Material & Plating	Brass, Gold plating
Current ration	5A
Spring force	350g±50gf @ load 4.0mm working stroke
Packaging	plastic bag into cartons





## Our Service

1. We can reply your inquiry within 24 working hours.
2. Customized design is available and OEM are welcomed.
3. We can deliver the probe pins to our clients all over the world with speed and precision.
4. We can provide the lowest price with high quality product to our client.

## Main Products

[Spring loaded pin](#) (single) for [PCB](#), [ICT](#), [FCT testing](#) etc;

[Pogo pin \(connector\)](#) to establish connection between two printed circuit boards for charging, locating, [Battery](#), [Semiconductor](#) & Interconnect applications;

[Double ended probe](#) for [BGA](#) and Semiconductor testing;

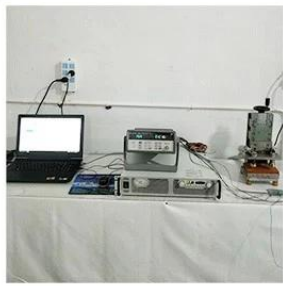
Universal pin without spring, coating pin, LM pin with QZ and VZ series;

[High current probe](#), [Switch probe](#), Capacitance needle;

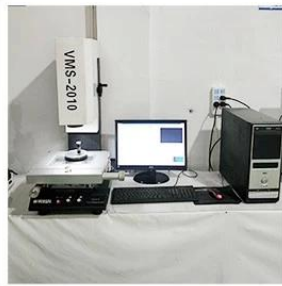
Terminal & receptacle /socket;

Other related electronic components, 30# OK wire, Jig locks, POM, Iron hinge etc

## Test Equipment



1. Agilent current testing



2. Quadratic element



3. Load Curve Meter



4. Bond Test



5. Life Fatigue Test



6. Microscope

## Packaging and Delivery

Standard products will be delivered out within 3 days. Customized products will be sent out within 15 days.

