

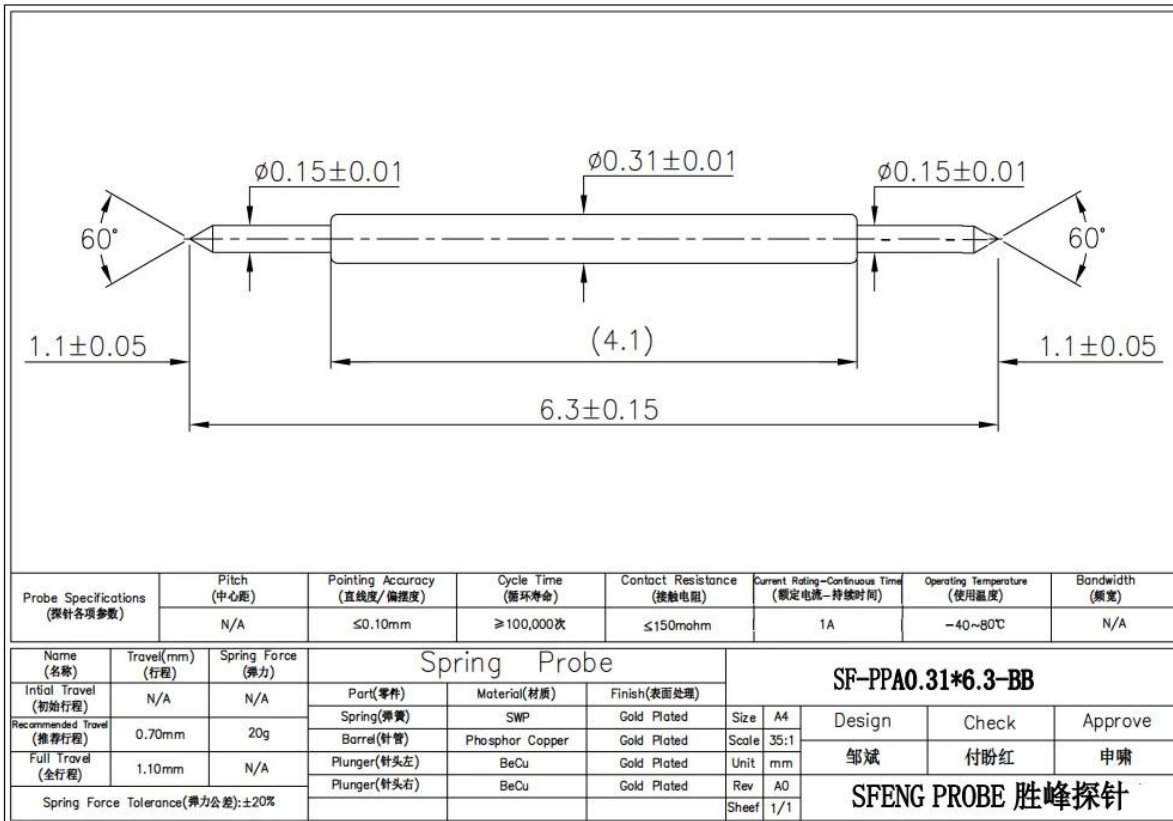
[Perno doppio contatto pin pogo SF-PPA0.31 BY 6.3-BB](#)

Specifica:

Marca	SFENG SONDA
Articolo Numero	Perno doppio contatto pin pogo SF-PPA0.31 BY 6.3-BB
tuffatore	Becu
barile	PhBz
Primavera	SWP
Placcatura	oro plated al di sopra di nichel
Primavera vigore	20g \pm 20% @ carico 0,70 mm corsa di lavoro
Contatto Resistenza	<50m ohm
attuale razione	1A
MOQ	100PCS Se noi avere azione
Condurre tempo	2-15days dopo ricevente il pagamento

Immagine Mostrare:





I nostri vantaggi:

1. we have 30 years experience in probe pin and have ourself factory.
2. we provide free sample and have a testing department.
3. we could manufacture products as your request.
4. we guarantee best price and good service.

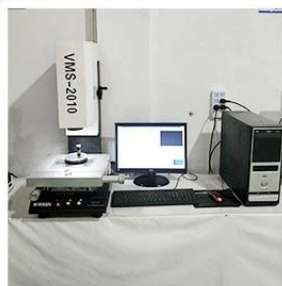
Il nostro prodotto principale:

Spring loaded pin (single) for PCB, ICT, FCT testing etc;
Pogo pin (connector) to establish connection between two printed circuit boards for charging, locating, Battery, Semiconductor & Interconnect applications;
Double ended probe for BGA and Semiconductor testing;
Universal pin without spring, coating pin, LM pin with QZ and VZ series;
High current probe, Switch probe, Capacitance needle;
Terminal & receptacle /socket;
Other related electronic components, 30# OK wire, Jig locks, POM, Iron hinge etc

Apparecchiature di collaudo:



1. Agilent current testing



2. Quadratic element



3. Load Curve Meter



4. Bond Test



5. Life Fatigue Test



6. Microscope

Pacchetto:

Standard products will be delivered out within 3 days. Customized products will be sent out within 15 days.

