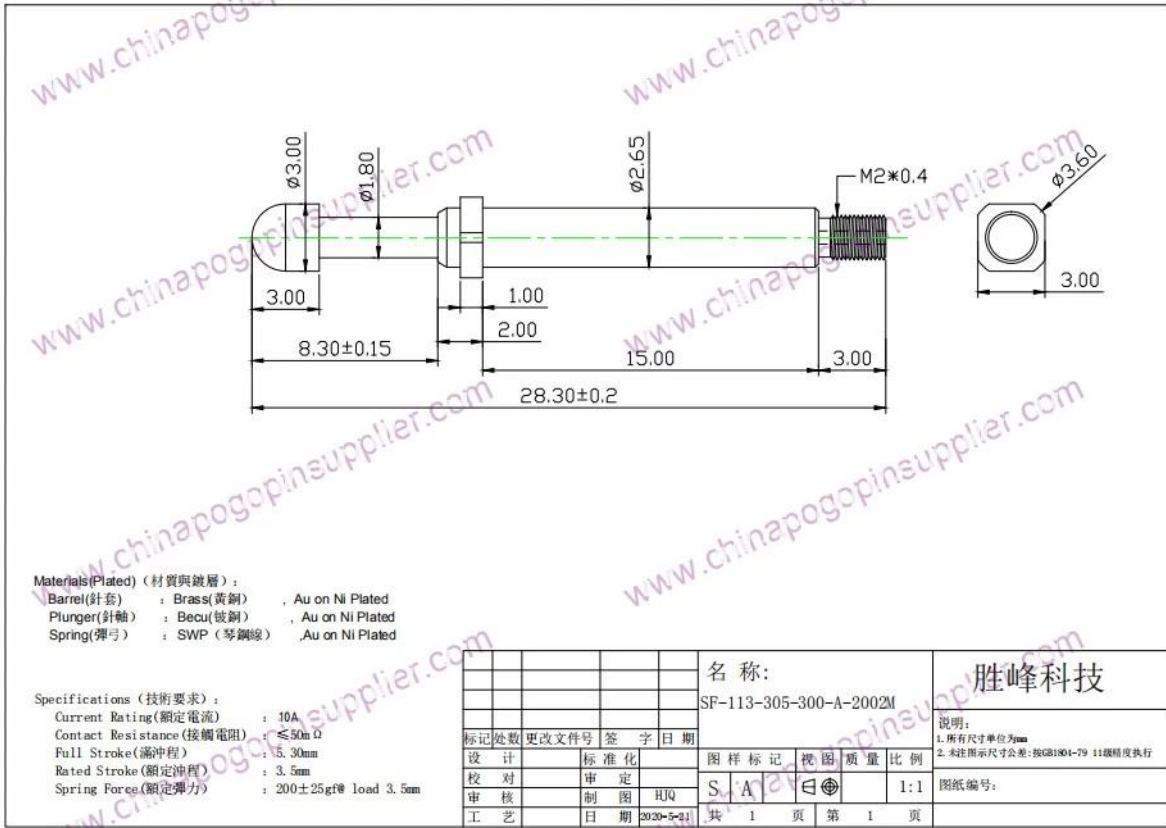


SF-113-305-300-A-2002M

品名 规格

品名	SF-113-305-300-A-2002M
规格	2.65mm×28.3m
材质 & 表面处理	黄铜 镀金 黄铜 镀金 黄铜 镀金
额定电流	10A
重量	200g±25gf @ 3.5mm 间距





FAQ

1. materail
2. OEM
3. 30 CNC
4. QC
5. shengteng shengteng
Suzhou shengteng Electronic Company
shengteng
6. 35

QQ



1. Raw material warehouse



2. Lathe workshop



3. Assemble workshop



4. Quality inspection



5. Finished products

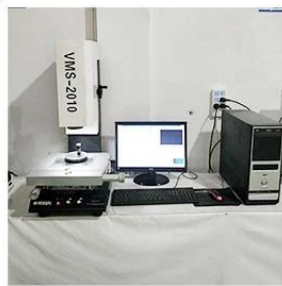


6. Packing

□□□□



1. Agilent current testing



2. Quadratic element



3. Load Curve Meter



4. Bond Test



5. Life Fatigue Test



6. Microscope

□□□□

Standard products will be delivered out within 3 days. Customized products will be sent out within 15 days.

