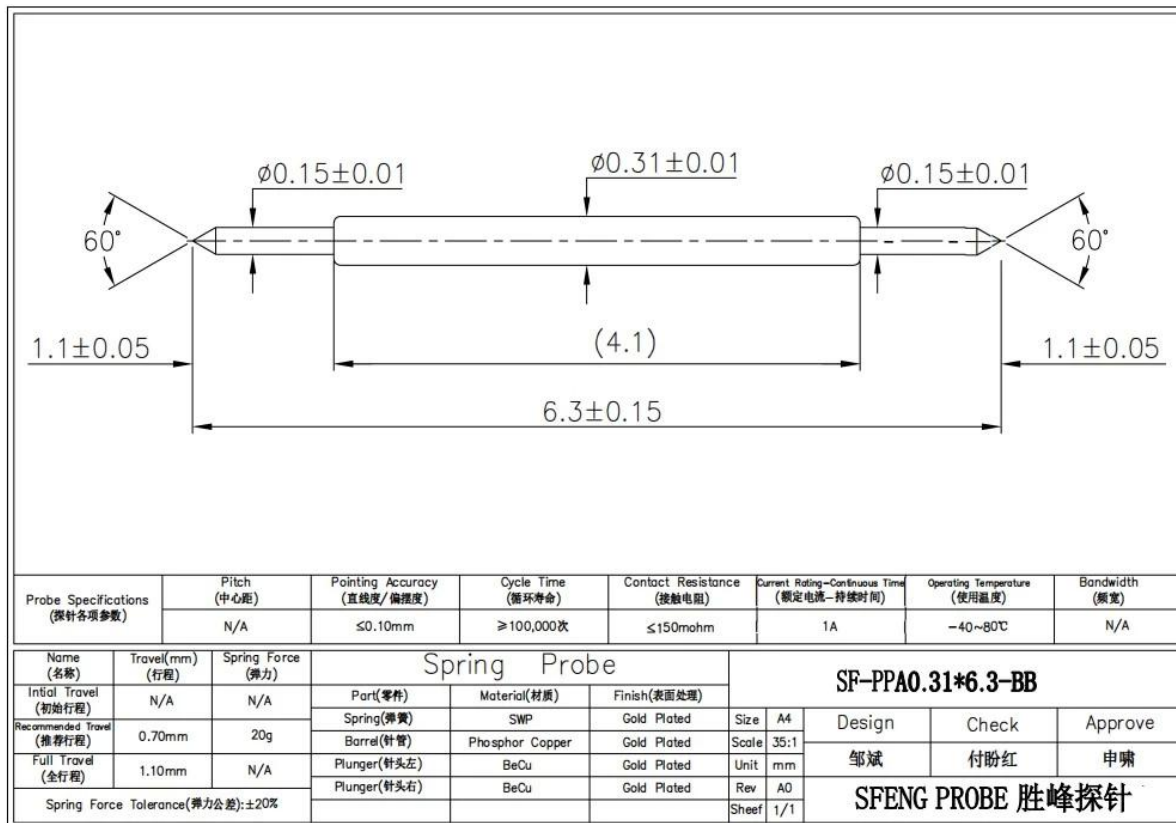


SF-PPA0.31 BY 6.3-BB

	SFENG
	SF-PPA0.31 BY 6.3-BB
	Becu
	PhBz
	SWP
	20g ±20@0.70mm
	<50m
	1A
MOQ	100
	2-15





□□□□□□□□

- 1.we have 30 years experience in probe pin and have ourself factory.
- 2.we provide free sample and have a testing department.
- 3.we could manufacture products as your request.
- 4.we guarantee best price and good service.

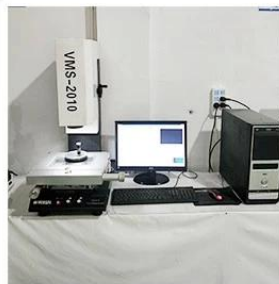
□□□□□□□□□□

Spring loaded pin (single) for PCB, ICT, FCT testing etc;
Pogo pin (connector) to establish connection between two printed circuit boards for charging, locating, Battery, Semiconductor & Interconnect applications;
Double ended probe for BGA and Semiconductor testing;
Universal pin without spring, coating pin, LM pin with QZ and VZ series;
High current probe, Switch probe, Capacitance needle;
Terminal & receptacle /socket;
Other related electronic components, 30# OK wire, Jig locks, POM, Iron hinge etc

□□□□□



1. Agilent current testing



2. Quadratic element



3. Load Curve Meter



4. Bond Test



5. Life Fatigue Test



6. Microscope

□□□□□□

Standard products will be delivered out within 3 days. Customized products will be sent out within 15 days.

