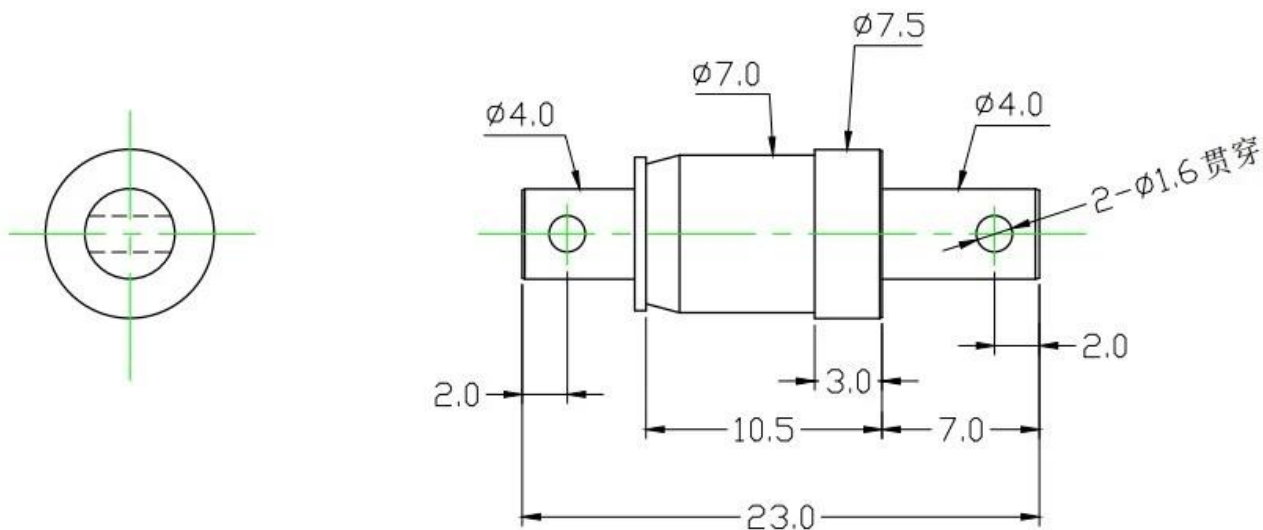


□□□□

□□□□	SF1179
□□□	□□7.5×□□23.0mm
□□	□□□□□□:□□ □□□:□□ □□□□□:SWP
MOQ	300□
□□□	T/T
□□	□□□□□□□□□□ 5 □ 15 □

□□ □□□□□



□□ □□



1. raw material warehouse



2. Lathe workshop



3. Assemble workshop



4. Quality inspection



5. Finished products



6. Packing



Measuring Equipment >



Measuring Equipment:

1. Agilent current testing;
2. Quadratic element measurement
3. Load Curve Meter
4. Bond Test
5. Life Fatigue Test



