

1002.3 ICT 零件 规格 SF-PA1.65 BY 32.3-LM2.0

规格

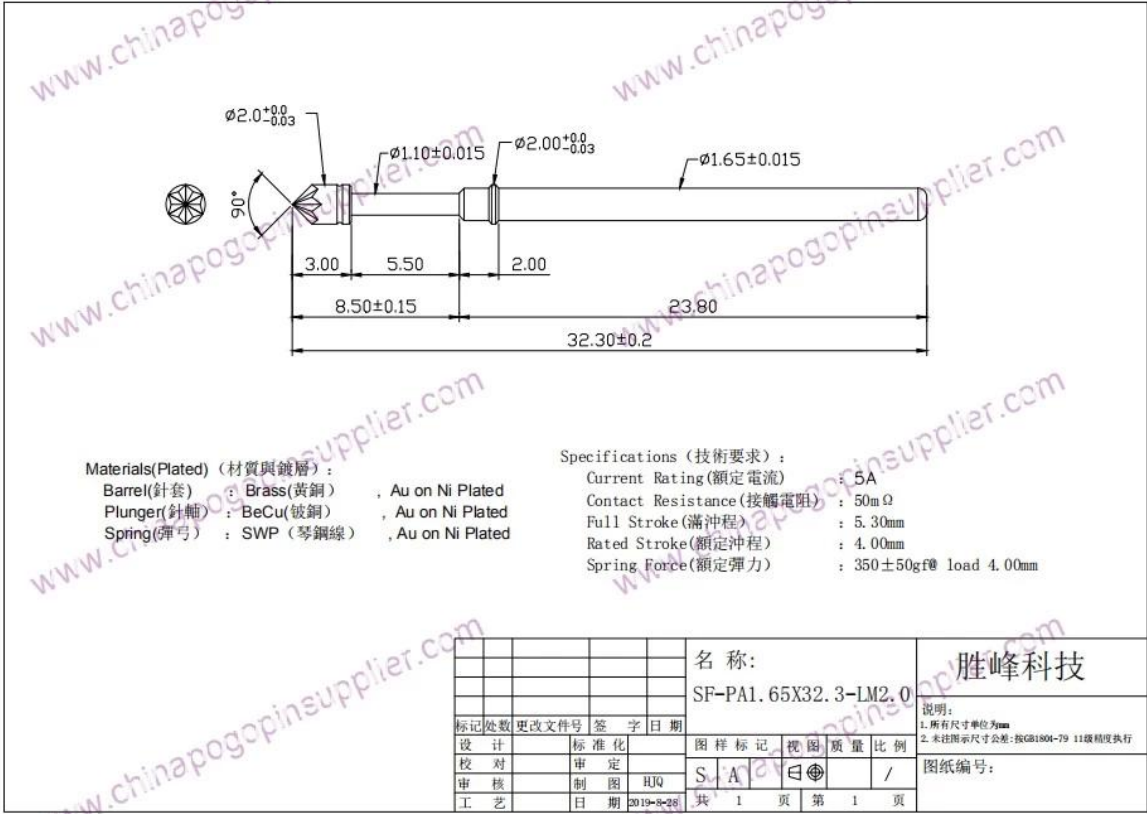
品牌	SFENG
零件号	SF-PA1.65X32.3-LM2.0
材料	BeCu
表面处理	镀金
工艺	SWP
重量	350g ± 50g
厚度	4.0mm
公差	±0.05
电阻	50mΩ
电流	5A
长度	5.30mm
MOQ	1000
交货期	标准 7-15 天

规格 零件 号 规格

SFENG
The China's The World's



□□□ □□□ □ □□□



□□□ □□□

1. □□ □□.
2. □□□ □□ □□□□□.
3. □□ □□ □□ □ □□ □□.
4. □□□□ □□ □□.

□□ □□

PCB, ICT, FCT □□□□ □□□□□ □ (□□);

□□, □□□□, □□□, □□□ □ □□□□□□ □ □□ □□ □□ □□□ □□□ □□□ □ (□□□) □□ □□ □□□□□□;

BGA □ □□□ □□□ □□ □□ □□□;

□□ □ □□□ □□, □□□ □□, LM □ QZ □ VZ □□□;

□□□ □□□, □□□ □□□, □□□□ □□;

□□□ □□□; □□ / □□;

□□ □□ □□ □□, 30 # OK □□, □□ □□, POM, □ □□ □

□□ □□



1. Raw material warehouse



2. Lathe workshop



3. Assemble workshop



4. Quality inspection



5. Finished products

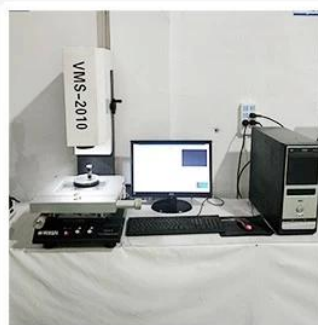


6. Packing

□ □ □ □



1. Agilent current testing



2. Quadratic element



3. Load Curve Meter



4. Bond Test



5. Life Fatigue Test



6. Microscope

□ □ □ □ □ □

Standard products will be delivered out within 3 days. Customized products will be sent out within 15 days.

