

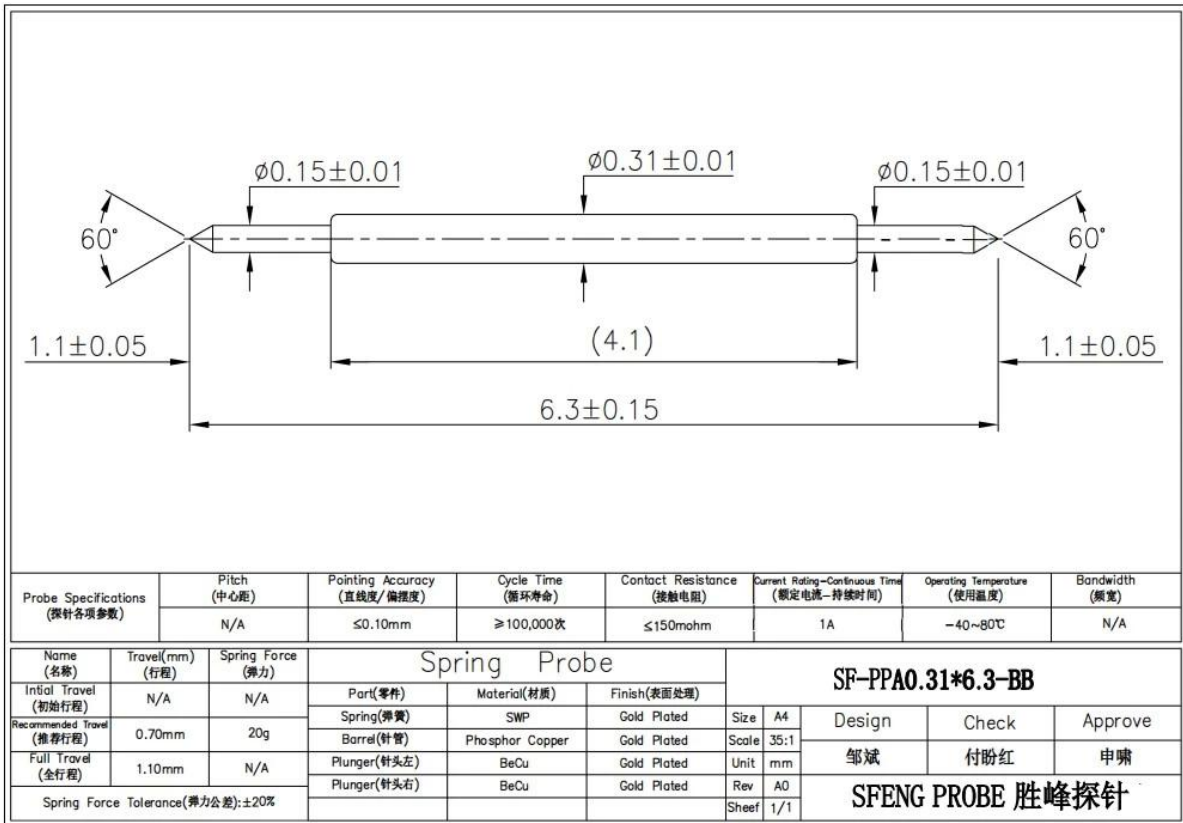
[SF-PPA0.31 BY 6.3-BB](#)

☐☐:

☐☐	SFENG ☐☐
☐☐ ☐☐	☐☐ ☐☐ ☐☐ ☐☐ ☐☐ SF-PPA0.31 BY 6.3-BB
☐☐☐	☐☐
☐	PhBz
☐	SWP
☐☐	☐ ☐☐ ☐☐ ☐☐
☐ ☐	20g ± 20 % @ ☐☐ 0.70mm ☐☐ ☐☐☐☐
☐☐ ☐☐	☐ 50m ☐
☐☐ ☐☐	1A
MOQ	100PCS ☐☐ ☐☐ ☐☐ ☐☐
☐☐ ☐☐	2 ~ 15 ☐ ☐ ☐☐ ☐☐☐ ☐☐

☐☐ ☐☐ ☐☐:





□□□ □□ :

- 1.we have 30 years experience in probe pin and have ourself factory.
- 2.we provide free sample and have a testing department.
- 3.we could manufacture products as your request.
- 4.we guarantee best price and good service.

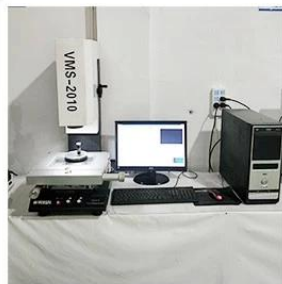
□□□ □□ □□ :

Spring loaded pin (single) for PCB, ICT, FCT testing etc;  
Pogo pin (connector) to establish connection between two printed circuit boards for charging, locating, Battery, Semiconductor & Interconnect applications;  
Double ended probe for BGA and Semiconductor testing;  
Universal pin without spring, coating pin, LM pin with QZ and VZ series;  
High current probe, Switch probe, Capacitance needle;  
Terminal & receptacle /socket;  
Other related electronic components, 30# OK wire, Jig locks, POM, Iron hinge etc

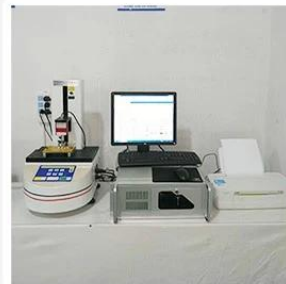
□□ □□ :



1. Agilent current testing



2. Quadratic element



3. Load Curve Meter



4. Bond Test



5. Life Fatigue Test



6. Microscope

□□□:

Standard products will be delivered out within 3 days. Customized products will be sent out within 15 days.

