

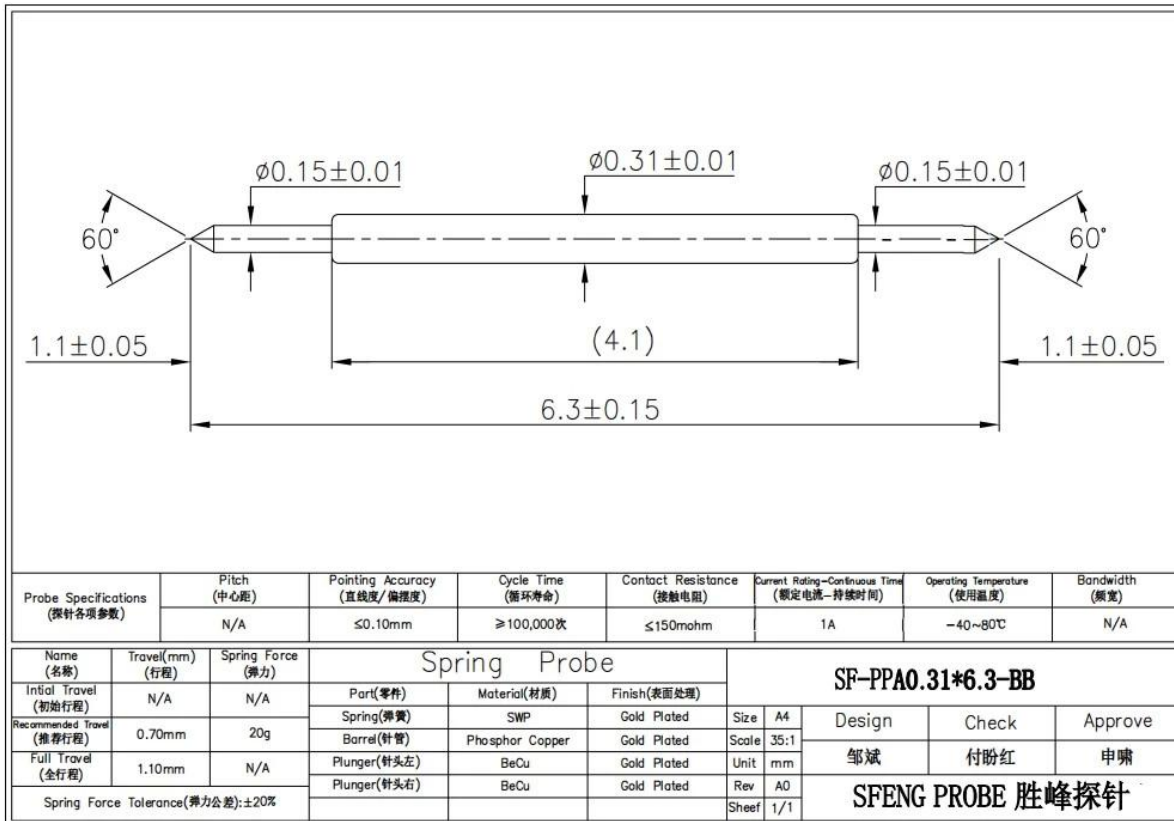
## Dubbelzijdig pin contact pogo pin SF-PPA0.31 BY 6.3-BB

Specificatie:

Merk	SFENG SONDE
Item Aantal	Dubbelzijdig pin contact pogo pin SF-PPA0.31 BY 6.3-BB
Plunjer	Becu
Vat	PhBz
De lente	SWP
Plateren	goud geplateerd over- nikkel
De lente dwingen	20 g $\pm$ 20% @ belasting 0,70 mm werkslag
Contact Weerstand	$\square$ 50m ohm
Actueel rantsoen	1A
MOQ	100st als wij hebben voorraad
Lood tijd	2-15 dagen na ontvangen de betaling

Afbeelding Laten zien:





Onze voordelen:

1. we have 30 years experience in probe pin and have ourself factory.
2. we provide free sample and have a testing department.
3. we could manufacture products as your request.
4. we guarantee best price and good service.

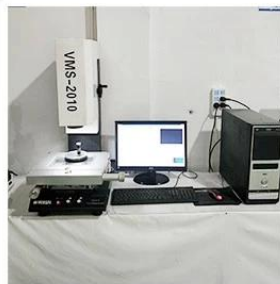
Ons belangrijkste product:

Spring loaded pin (single) for PCB, ICT, FCT testing etc;  
Pogo pin (connector) to establish connection between two printed circuit boards for charging, locating, Battery, Semiconductor & Interconnect applications;  
Double ended probe for BGA and Semiconductor testing;  
Universal pin without spring, coating pin, LM pin with QZ and VZ series;  
High current probe, Switch probe, Capacitance needle;  
Terminal & receptacle /socket;  
Other related electronic components, 30# OK wire, Jig locks, POM, Iron hinge etc

Uitrustig testen:



1. Agilent current testing



2. Quadratic element



3. Load Curve Meter



4. Bond Test



5. Life Fatigue Test



6. Microscope

Pakket:

Standard products will be delivered out within 3 days. Customized products will be sent out within 15 days.

