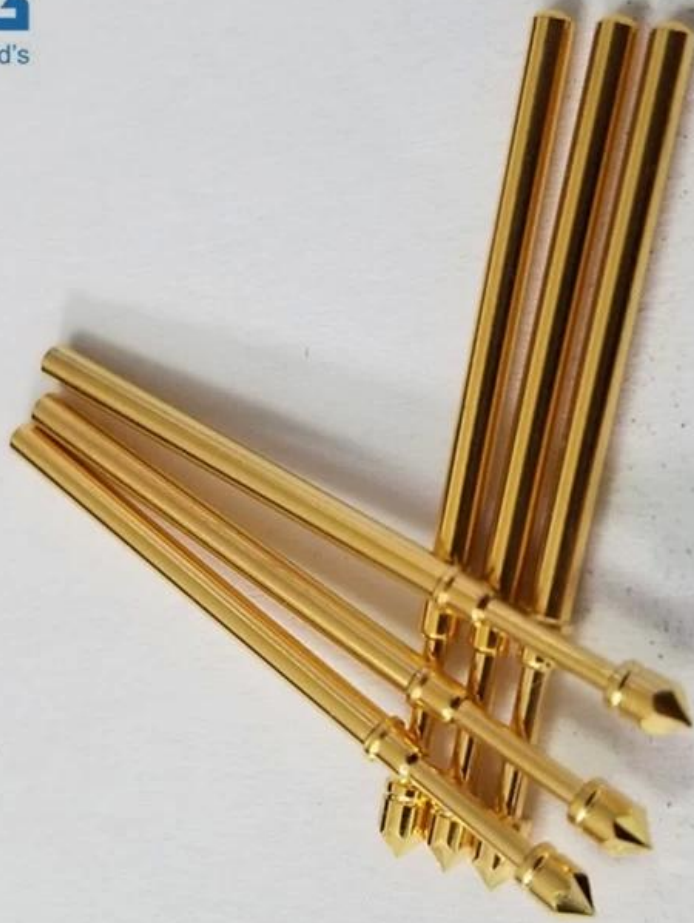


## **100mil ICT test probe SF-PA1.65 BY 32.3-LM2.0**

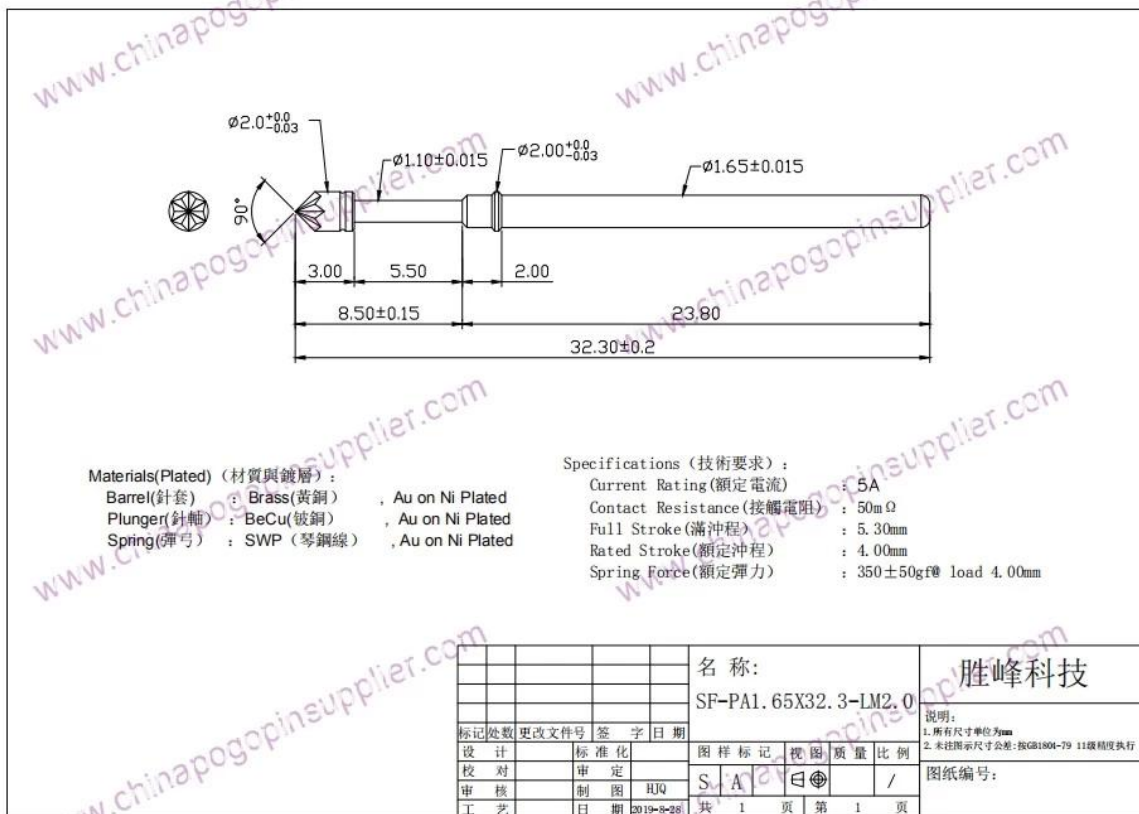
### **Specifications**

Brand	SFENG
Model	SF-PA1.65X32.3-LM2.0
Plunger	BeCu
Body	Brass
Spring	SWP
Spring force	350g±50g
Working travel	4.0mm
Plated	Gold plated
Contact Resistance	50mΩ
Current Ration	5A
Full Stroke	5.30mm
MOQ	1000
Lead Time	7-15 Days after confirming order

### **Customized probe pin Image**



*Customized probe pin drawing*



## our service

1. Quick response.
2. Customized is accepted.
3. Short production time and fast delivery.
4. High quality and good price.

## Main products

Spring-loaded pin (single) of PCB, ICT, FCT testing;

Spring pin (connector) to establish a connection between two printed circuit boards for charging, positioning, batteries, semiconductors and amplifiers; interconnect applications;

BGA and semiconductor test double-ended probe;

Universal pin no spring, paint needle, LM pin QZ and VZ series;

High current probe, the probe switches, capacitors needle;

Pier and amplifier; socket / socket;

Other related electronic components, 30 # OK line, jig lock, POM, iron hinges, etc.

## Production process



**1. Raw material warehouse**



**2. Lathe workshop**



**3. Assemble workshop**



**4. Quality inspection**

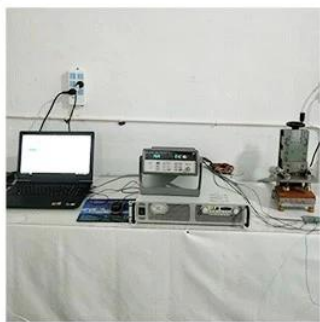


**5. Finished products**

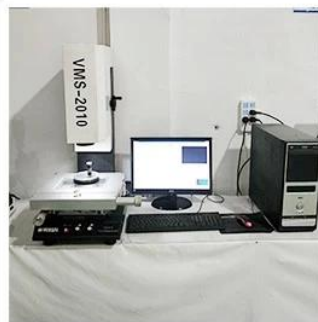


**6. Packing**

## *Testing equipment*



**1. Agilent current testing**



**2. Quadratic element**



**3. Load Curve Meter**



**4. Bond Test**



**5. Life Fatigue Test**



**6. Microscope**

## *Packing & delivery*

Standard products will be delivered out within 3 days. Customized products will be sent out within 15 days.

