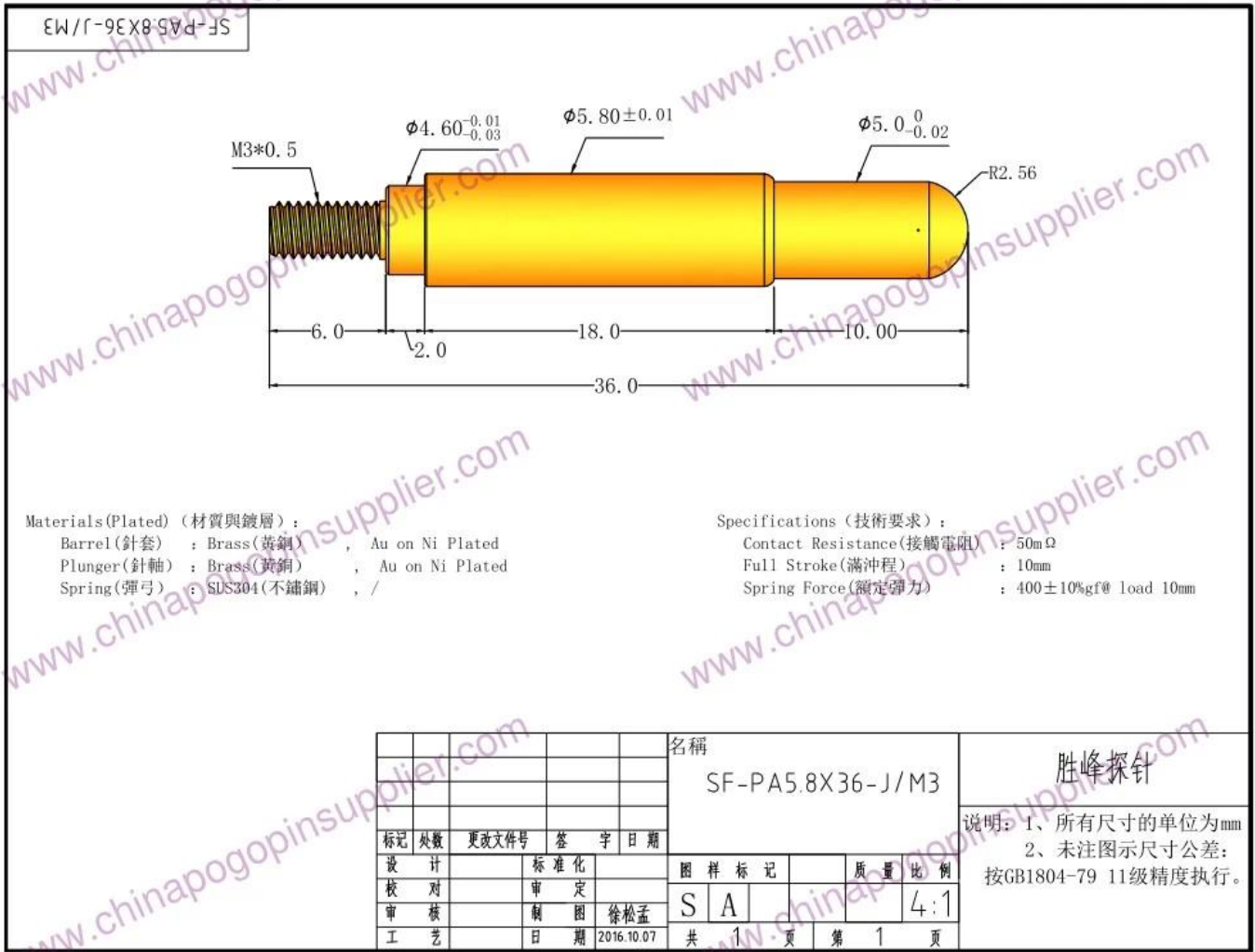


Product Specification

Brand	SFENG
Item number	pogo pim SF-PPA5.8*36-J/M3
Plating	Gold-plated
Lead time	7 working days after receiving the payment

Product Picture





Our Service

1. We can reply your inquiry within 24 working hours.
2. Customized design is available and OEM are welcomed.
3. We can deliver the probe pins to our clients all over the world with speed and precision.
4. We can provide the lowest price with high quality product to our client.

Main Products

Spring loaded pin (single) for PCB, ICT, FCT testing etc;

Pogo pin (connector) to establish connection between two printed circuit boards for charging, locating, Battery, Semiconductor & Interconnect applications;

Double ended probe for BGA and Semiconductor testing;







Universal pin without spring, coating pin, LM pin with QZ and VZ series;

High current probe, Switch probe, Capacitance needle;

Terminal & receptacle /socket;

Other related electronic components, 30# OK wire, Jig locks, POM, Iron hinge etc

Quality Control

Spring exhausted tester	DC power supply	Current resistance tester
 A tall, white, industrial-grade cabinet with a glass door and a control panel on the right side.	 A white, rectangular DC power supply unit with a black front panel. It features a red power switch, several control knobs, and output terminals. The brand name 'YoRi' is visible on the top left.	 A white, rectangular electronic device with a large green digital display showing '8.8.8.8'. It has a warning symbol and a control knob on the right side.
Microscope	Tensile strength tester	Spring tester
 A white and black compound microscope with a large objective lens and a stage.	 A blue and white mechanical testing machine with a vertical column and a sample holder.	 A white and blue mechanical testing machine with a digital display and a control panel.

Packing Picture

