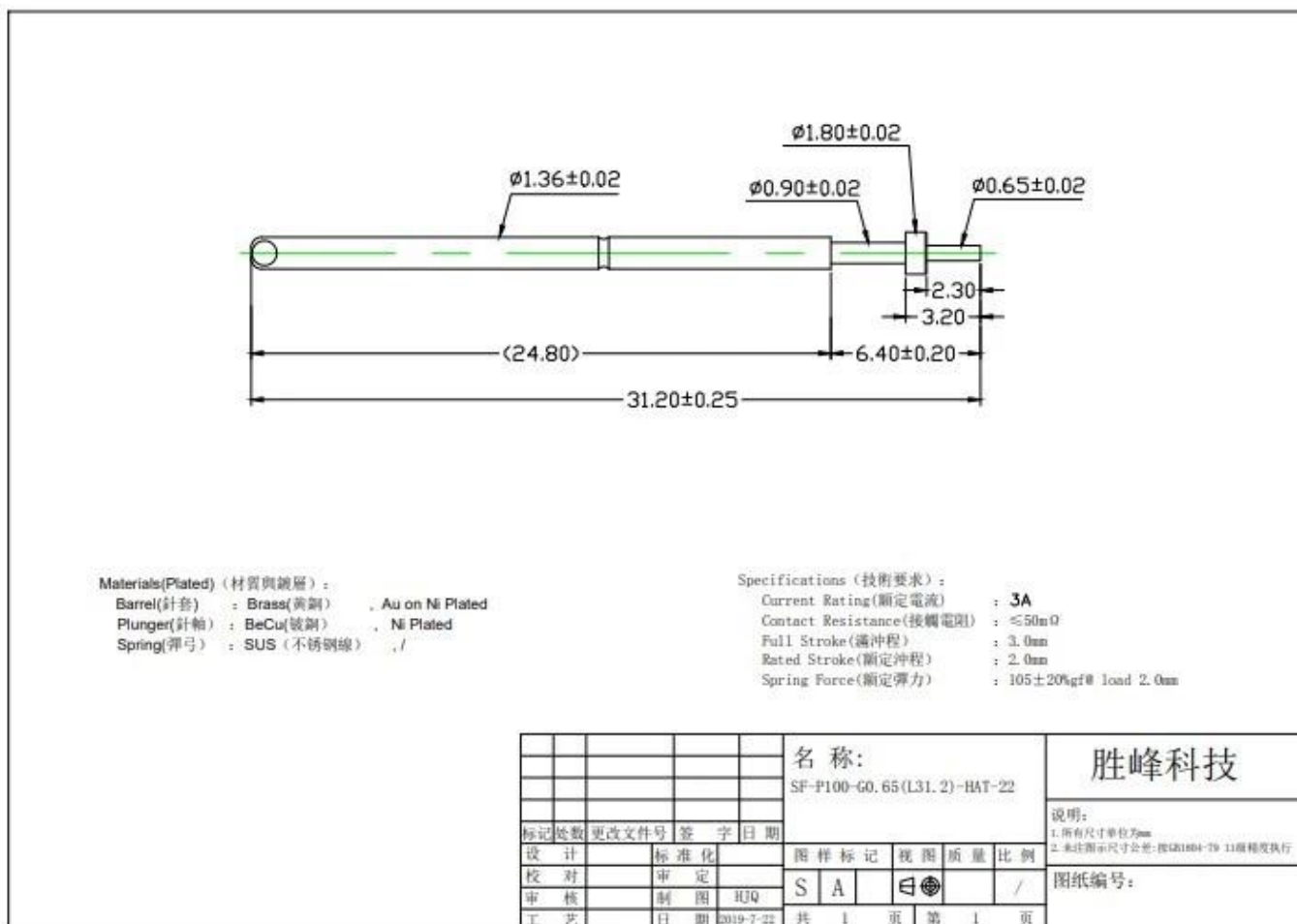
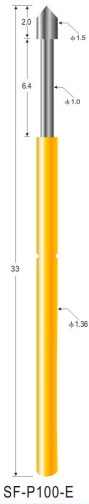


Production specifications

Item number	SF-P100-G
Pitch	1.90mm
Mounting hole size	1.35/1.40mm
Rated Stroke	2.0mm
Full travel	3.0mm
Spring force	105±20%gf@load 2.0mm
Current ration	3A
Current resistance	≤50mΩ
MOQ	100PCS
Payment	T/T
Delivery time	5-10days after receiving the payment

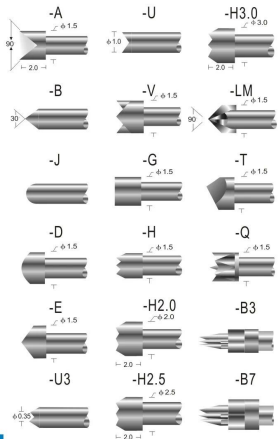
Product Pictures



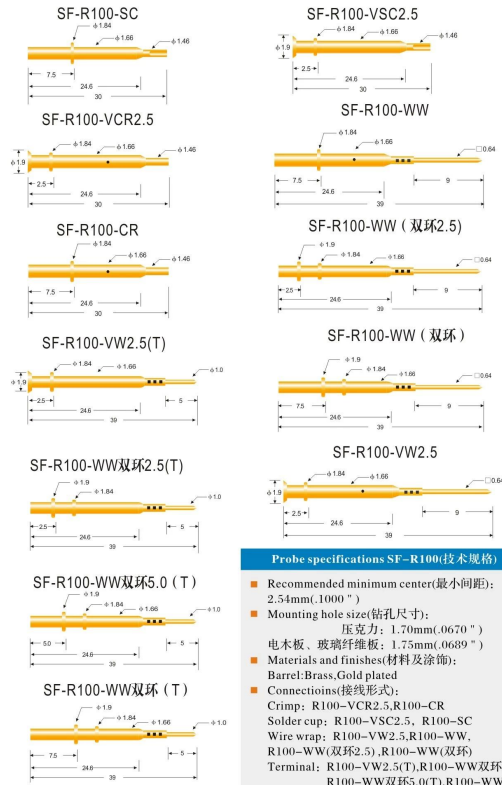


Probe specifications SF-P100(技术规格)

- Recommended minimum center(最小间距): 2.54mm(.1000")
- Mounting hole size(钻孔尺寸): 压克力: 1.70mm(.0670") 电木板、玻璃纤维板: 1.75mm(.0689")
- Full travel(行程): 6.40(.2520")
- Spring force(弹簧压力): 200g
- Materials and finishes(材料及涂饰): Plunger: Be Cu, Rh plated; SK4, Rh plated Barrel: Brass, Gold plated Spring: Stainless steel
- Current rating(额定电流): 3A(安培)
- Contact resistance(接触电阻): 50mΩ(毫欧姆)



Noted: Specifications subject to change without notice! 注: 规格变动不另行通知



Probe specifications SF-R100(技术规格)

- Recommended minimum center(最小间距): 2.54mm(.1000")
- Mounting hole size(钻孔尺寸): 压克力: 1.70mm(.0670") 电木板、玻璃纤维板: 1.75mm(.0689")
- Materials and finishes(材料及涂饰): Barrel: Brass, Gold plated
- Connections(接线形式): Crimp: R100-VCR2.5, R100-CR Solder cup: R100-VSC2.5, R100-SC Wire wrap: R100-VW2.5, R100-WW, R100-WW(双环2.5), R100-WW(双环), R100-WW(双环2.5(T)), R100-WW(双环(T)), R100-WW双环5.0(T), R100-WW双环(T)

Noted: Specifications subject to change without notice! 注: 规格变动不另行通知



Production Flow



1. raw material warehouse



2. Lathe workshop



3. Assemble workshop



4. Quality inspection



5. Finished products



6. Packing

Testing Equipment

Measuring Equipment >



Measuring Equipment:

1. Agilent current testing;
2. Quadratic element measurement
3. Load Curve Meter
4. Bond Test
5. Life Fatigue Test

Packing



Main products

- 1.Spring loaded pin(single)for PCB,ICT,FCTtesting etc;
- 2.Pogo pin(connector)to establish connection between two printed circuit boards for charging,locating,battery,semiconductor&interconnector applications;
- 3.Double ended probes for BGA and semiconductor testing;
- 4.Universal pin without spring,coating pin,LM pin with QZ and VZ series;
- 5.High current probe,switch probe,capacitance needle;
- 6.Terminal&receptacle/socket;
- 7.Other related electronic components,Jig locks,POM and etc.

Whatever you want,please contact us without hesitation ,and we will try our best to meet your requirement within our capability.

Our service

- 1.We can reply your inquiry within 24 working hours;
- 2.Customized design is available and OEM are welcomed;
- 3.We can deliver the probe pins to our clients all over the world with speed and precision.
- 4.We can provide the lowest price with high quality products to our clients.

