

## **High frequency probe SF-2.87 BY 56.0-H**

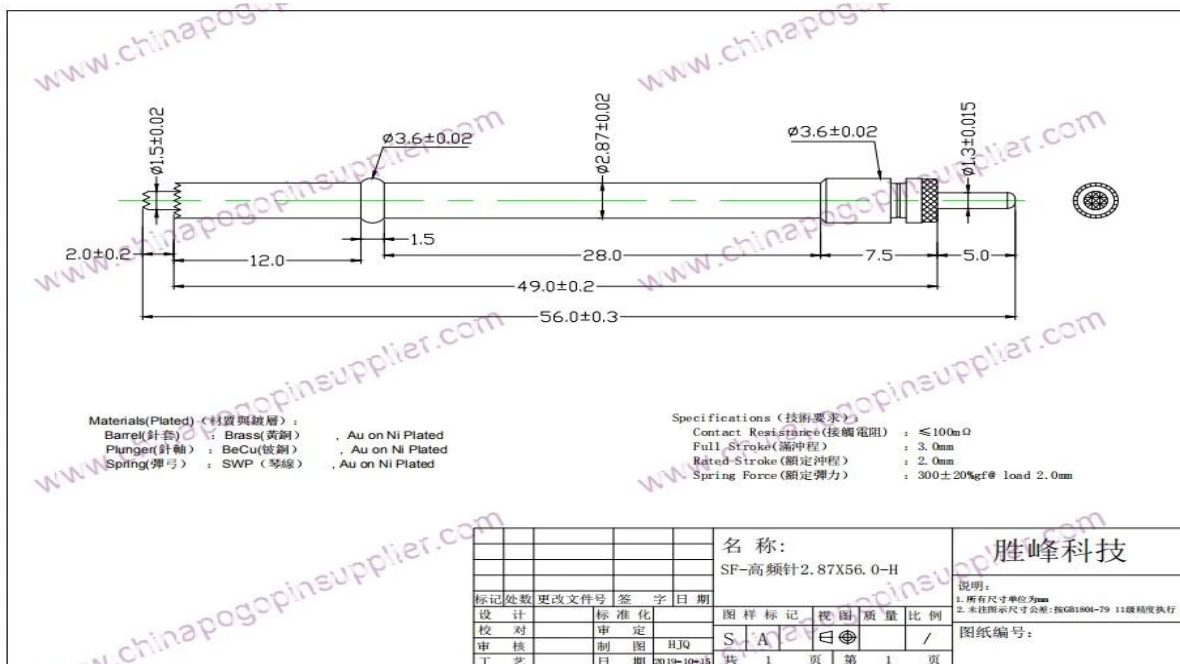
### **Specifications**

Brand	SFENG
Model	SF-PA1.65X32.3-LM2.0
Plunger	Brass
Body	Brass
Spring	SWP
Spring force	300g±20%
Working travel	3.0mm
Plated	Gold plated
Contact Resistance	≤100mΩ
Certification	ISO
MOQ	1000
Lead Time	7-15 Days after confirming order

### **Customized probe pin Image**



## Customized probe pin drawing



## ***our service***

1. Quick response.
2. Customized is accepted.
3. Short production time and fast delivery.
4. High quality and good price.

## ***Main products***

Spring-loaded pin (single) of PCB, ICT, FCT testing;

Spring pin (connector) to establish a connection between two printed circuit boards for charging, positioning, batteries, semiconductors and amplifiers; interconnect applications;

BGA and semiconductor test double-ended probe;

Universal pin no spring, paint needle, LM pin QZ and VZ series;

High current probe, the probe switches, capacitors needle;

Pier and amplifier; socket / socket;

Other related electronic components, 30 # OK line, jig lock, POM, iron hinges, etc.

## ***Production process***



**1. Raw material warehouse**



**2. Lathe workshop**



**3. Assemble workshop**



**4. Quality inspection**

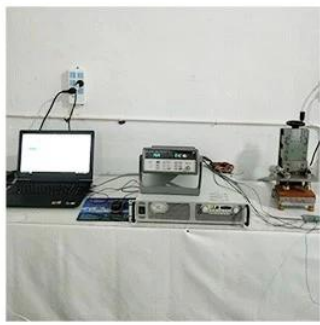


**5. Finished products**

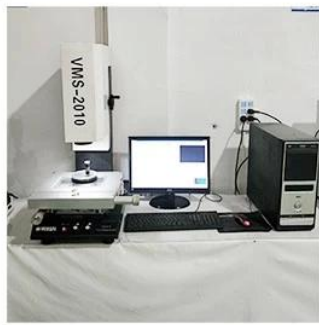


**6. Packing**

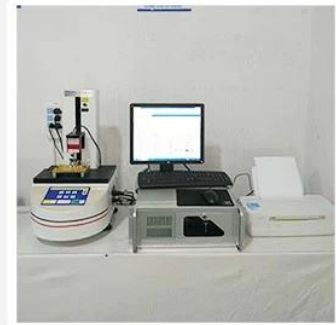
## Testing equipment



1. Agilent current testing



2. Quadratic element



3. Load Curve Meter



4. Bond Test



5. Life Fatigue Test



6. Microscope

## Packing & delivery

Standard products will be delivered out within 3 days. Customized products will be sent out within 15 days.

