

ICT Test probe SF-PA100-J L38.8

Material and finishes

Plunger: Bronze or Brass or BeCu, gold plated or nickel plated;

Barrel: Brass, Gold plated or Nickel plated;

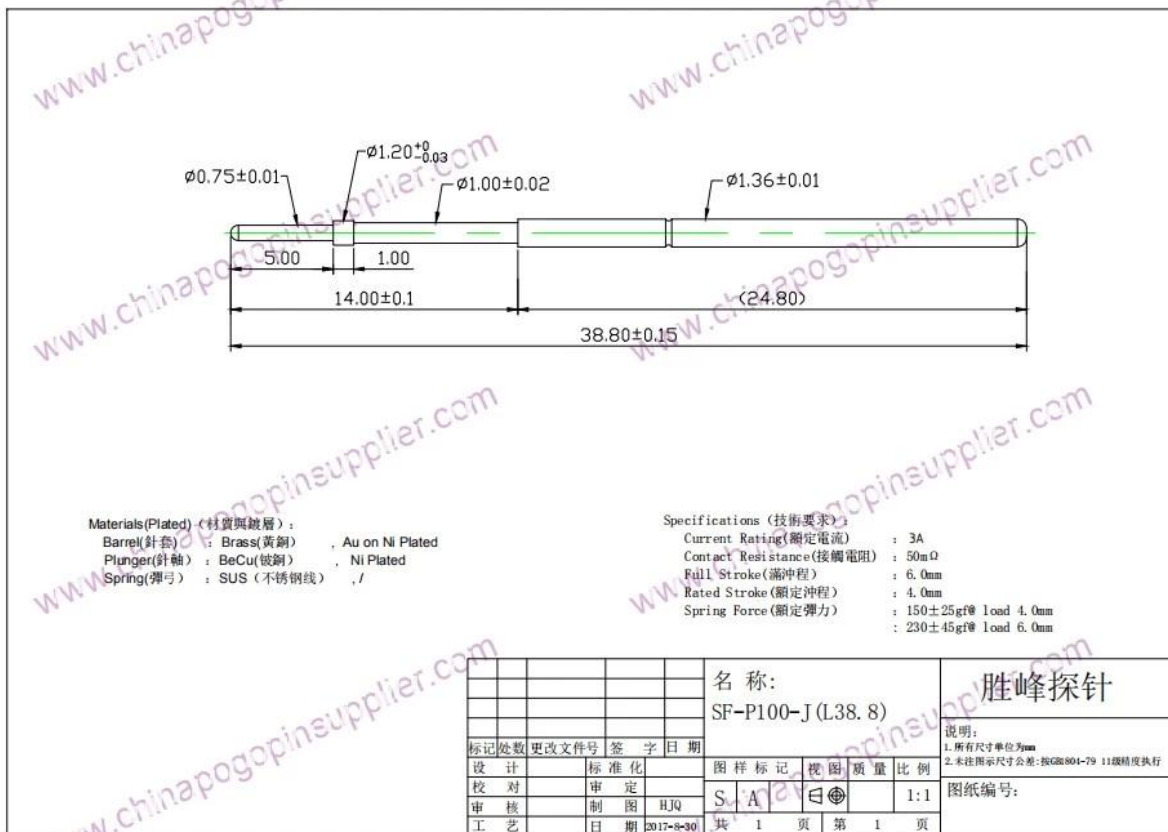
Spring: Stainless steel or Music wire;

Pictures

- Any tips, we could provide for you
- If you are interested in it, pls contact me

SFENG
The China's The World's





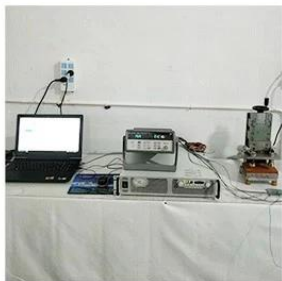
Our Advantages

1. we have 30 years experience in probe pin and have ourself factory.
2. we provide free sample and have a testing department.
3. we could manufacture products as your request.
4. we guarantee best price and good service.

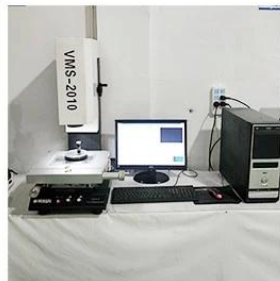
Our Main Product

Spring loaded pin (single) for PCB, ICT, FCT testing etc;
Pogo pin (connector) to establish connection between two printed circuit boards for charging, locating, Battery, Semiconductor & Interconnect applications;
Double ended probe for BGA and Semiconductor testing;
Universal pin without spring, coating pin, LM pin with QZ and VZ series;
High current probe, Switch probe, Capacitance needle;
Terminal & receptacle /socket;
Other related electronic components, 30# OK wire, Jig locks, POM, Iron hinge etc

Testing Equipment Control



1. Agilent current testing



2. Quadratic element



3. Load Curve Meter



4. Bond Test



5. Life Fatigue Test



6. Microscope

Packaging and Shipment

Standard products will be delivered out within 3 days. Customized products will be sent out within 15 days.

