

## Specifications

|                     |   |
|---------------------|---|
| Brand               | SFENG                                   |
| Model               | Switching contact probe SF-KP 2.65*42.5 |
| Plunger             | Beryllium Copper                        |
| Body                | Brass                                   |
| Spring              | Music wire                              |
| Spring force        | Customized                              |
| Full travel         | 5.2 mm                                  |
| Switch path         | 1.7 mm                                  |
| Current Resistance  | NO                                      |
| Spacing             | NO                                      |
| Mounting dimensions | NO                                      |
| MOQ                 | 100                                     |
| delivery time       | 15 Days after confirming order          |

## Product Image

**SFENG**

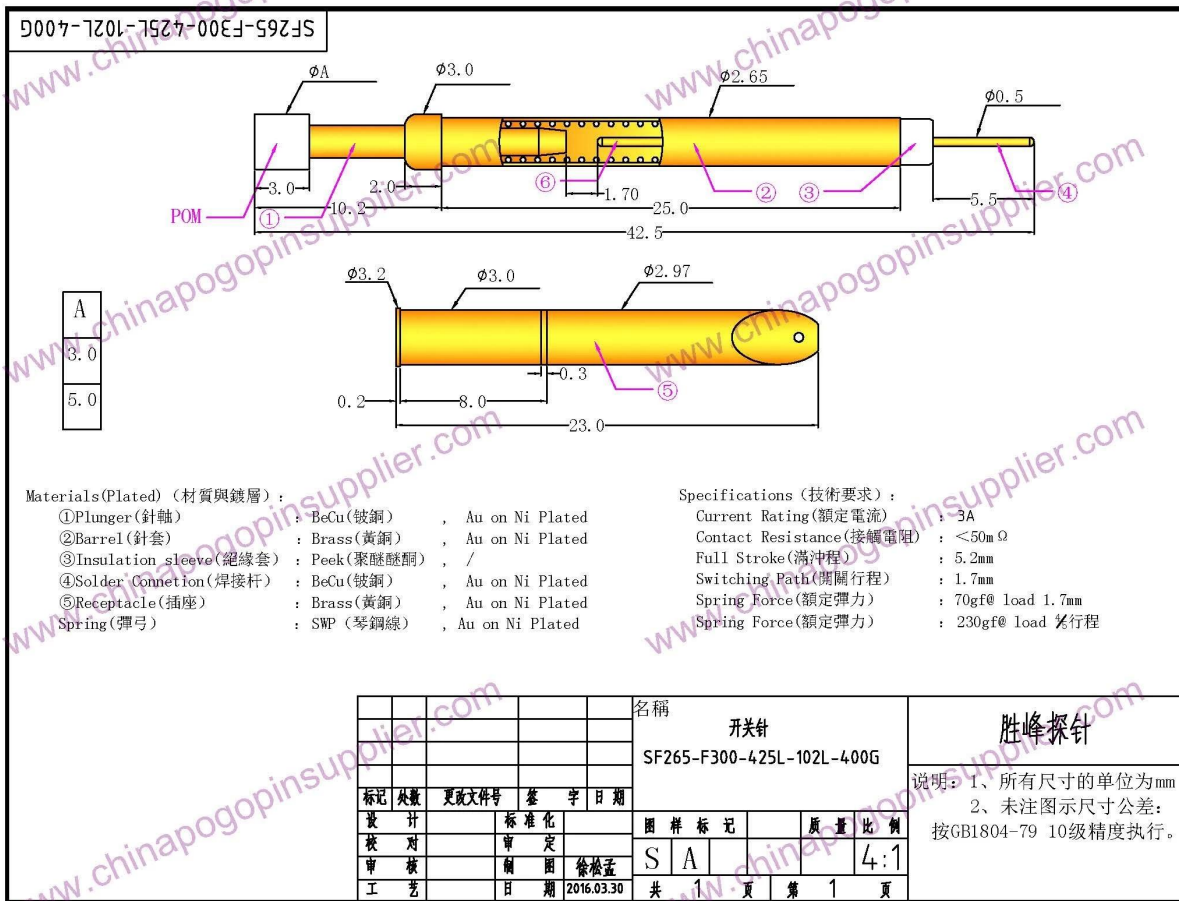
The China's The World's



**SFENG**  
The China's The World's



*Switching test probe drawing*



## our service

1. Quick response.
2. Customized is accepted.
3. Short production time and fast delivery.
4. High quality and good price.

## Main products

Spring-loaded pin (single) of PCB, ICT, FCT testing;

Spring pin (connector) to establish a connection between two printed circuit boards for charging, positioning, batteries, semiconductors and amplifiers; interconnect applications;

BGA and semiconductor test double-ended probe;

Universal pin no spring, paint needle, LM pin QZ and VZ series;

High current probe, the probe switches, capacitors needle;

Pier and amplifier; socket / socket;

Other related electronic components, 30 # OK line, jig lock, POM, iron hinges, etc.

## Production process



1. Raw material warehouse



2. Lathe workshop



3. Assemble workshop



4. Quality inspection

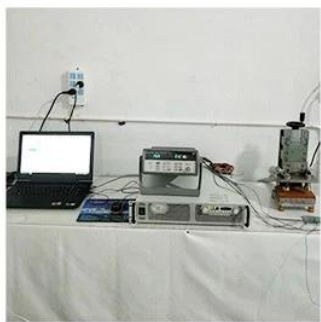


5. Finished products

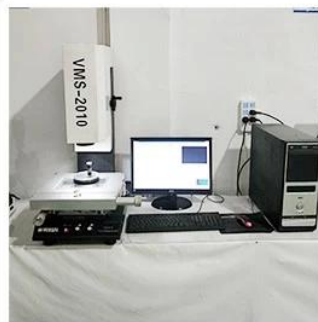


6. Packing

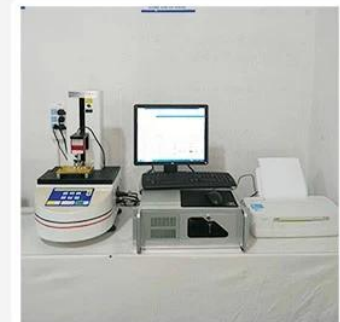
## Testing equipment



1. Agilent current testing



2. Quadratic element



3. Load Curve Meter



4. Bond Test



5. Life Fatigue Test



6. Microscope

## Packing & delivery

Standard products will be delivered out within 3 days. Customized products will be sent out within 15 days.

